

# ECONO

# HÄFELE



## CLEVER STORAGE ECONO

Brought to you by Häfele

## A SPECIALIST IN EVERY CUPBOARD

A cupboard is rarely just a cupboard – certainly not in the kitchen! Kesseböhmer manufactures fittings in Germany specifically designed to match the contents of your cupboards.

Clever storage is an approach which focuses on ensuring that everything has its place, your storage is well organised and its easy to find and retrieve the items your customers want!

### KEY FEATURES OF KESSEBÖHMER ECONO FITTINGS



- **SOFTSTOPP** dampens the closing action.
- **SILVER POWDER COATING** is corrosion, UV resistant and a mechanically resilient surface. It's easy on the environment as no solvents are used.
- **LIFE CYCLE TESTING** – LGA certified.





## DISPENSA 70 ECONO PANTRY 300/400

- > Material: Steel support frame, wire baskets with removable plastic tray base
- > Finish: Powder-coated silver extension, Silver powder coated frame and grey tray base
- > Load capacity (kg): 70
- > Version: Fixed height, full extension
- > Internal cabinet depth (mm): Min. 500
- > Internal cabinet height (mm): 1727



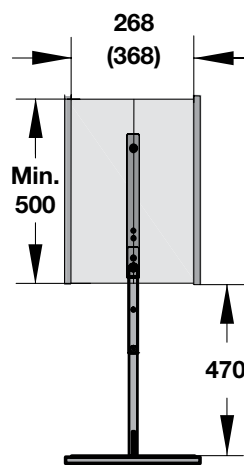
### Supplied with:

- > 1 Runner
- > 1 Pull out frame (fixed height)
- > 1 Set of front brackets
- > 5 Silver powder coated ECONO wire baskets with tray
- > SoftStopp damper



### Note:

Maximum weight capacity not to exceed 90 kg (includes unit, payload and door weight).



Installation dimensions



Description	Cat. No.
DISPENSA 70 ECONO 5 BASKET 300, SILVER	546.50.970
DISPENSA 70 ECONO 5 BASKET 400, SILVER	546.50.972

Packing: 1 Set

# ECONO



## TANDEM SIDE ECONO DOOR RACK 450

- > Features: Can be used for cabinet with a width of 450mm  
Fixed height door shelves
- > Height (mm): 1700
- > Load capacity (kg): 20



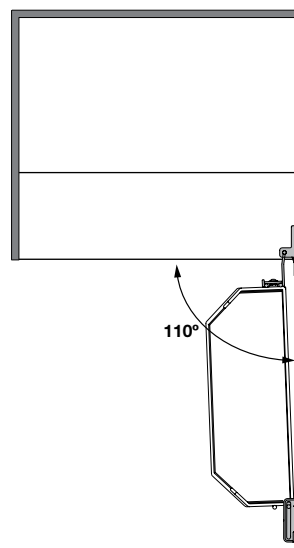
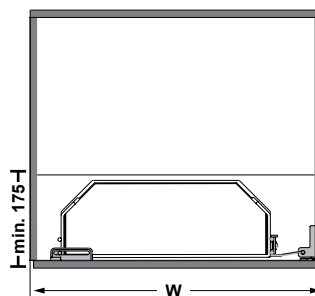
### Supplied with:

- > Complete set with fixing brackets



### Note:

Internal cabinet shelves to be reduced by 175mm.



### Description

TANDEM SIDE ECONO DOOR RACK 450 X 1700MM, SILVER

### Cat. No.

545.94.981

Packing: 1 Set

COMING SOON  
NOVEMBER 2021

## LEMANS II ECONO 450 - WITHOUT SOFT CLOSE

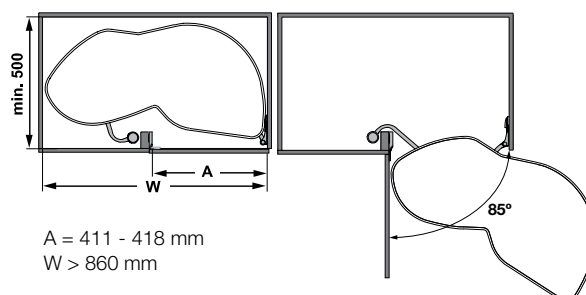
- > Finish: Silver powder coated and grey tray base
- > Cabinet height (mm): 600 - 750
- > Load capacity (kg): 50 (25kg per shelf)



**Supplied with:**

- > 2 Trays
- > 1 Height adjustable mounting axle

**Right swivel shown below**



Description	Cat. No.
LEMANS II ECONO RIGHT SWIVEL, 450MM DOOR, SILVER	541.28.900
LEMANS II ECONO LEFT SWIVEL, 450MM DOOR, SILVER	541.28.901

Packing: 1 Set

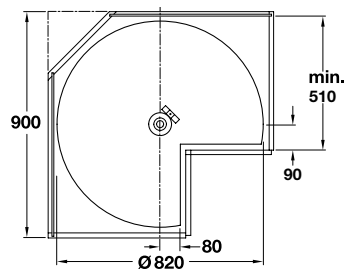


# ECONO



## CAROUSEL 270 ECONO 900

- > Area of application: For base mounted corner units 900 x 900mm with overlay hinged doors
- > Material: Steel spindle, height compensation bearing, tube, lower axle bearing and carousels, plastic top axle bearing
- > Finish: Chrome-plated spindle and lower axle bearing, Silver powder coated rail and grey tray base
- > Version: Spindle with multiple perforations
- > Function: Independently swivelling carousels
- > Internal cabinet height (mm): 685-735
- > Mounting: Screw fixings



Base corner unit 900 x 900 mm



### Supplied with:

- > 1 Mounting axle
- > 2 Brackets

### Description

CAROUSEL 270 ECONO, 900MM, SILVER

### Cat. No.

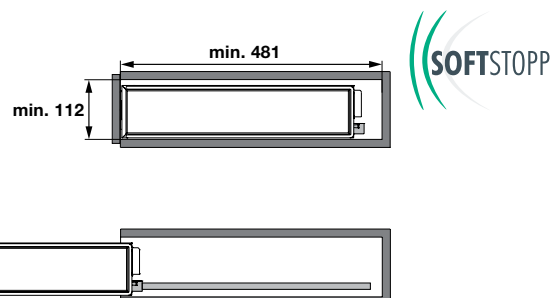
542.31.902

Packing: 1 Set



## NO.15 ECONO PULL OUT

- > Material: Steel
- > Finish: Silver powder coated
- > Load capacity (kg): 12 (Max. 6kg per shelf)
- > Type of pull out: Full extension, with SoftStopp damper
- > Internal cabinet width (mm): 112
- > Internal cabinet depth (mm): Min. 481
- > Internal cabinet height (mm): Min. 540
- > Mounting: Screw fixing to carcase (right hand side)


**Supplied with:**

- > 1 Metal frame and trays
- > 2 Full extension runners

**Description**

NO.15 ECONO PULL OUT - 2 TIER, 150MM, SILVER

**Cat. No.**

549.24.960

Packing: 1 Piece

# ECONO



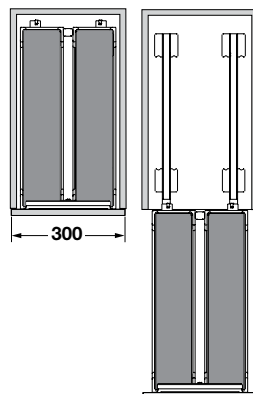
## DISPENSA JNR III ECONO 300

- |                                 |  |
|---------------------------------|--|
| > Material:                     | Steel extension frame, wire baskets with removable plastic tray base |
| > Finish:                       | Silver powder coated extension frame and baskets, Grey tray base     |
| > Load capacity (kg):           | 24 (Max. 12 kg per shelf)  |
| > Type of pull out:             | Full extension, with SoftStopp damper                                |
| > External cabinet width (mm):  | Min. 300   |
| > External cabinet depth (mm):  | Min. 496   |
| > Internal cabinet height (mm): | Min. 600   |



### Supplied with:

- > 1 Frame
- > 2 Trays



### Description

DISPENSA JUNIOR III ECONO SET, 300MM, SILVER

### Cat. No.

545.10.872

Packing: 1 Set





## COOKING AGENT

- > Features: Base mounted, front fixed pull-out unit  
modular elements to allow for customised  
design layouts  
One piece base with streamlined wire  
surround
- > Material: Steel frame and runner, steel and plastic  
modular elements
- > Finish: Grey powder coated frame, runner and  
modular elements, grey modular elements
- > Dimensions (mm): 260 x 489 x 625 (W x D x H)
- > Load capacity (kg): 16
- > Extension length (mm): 440
- > Mounting: Screw fixing to base panel and front panel


**Description**

COOKING AGENT

**Cat. No.**

549.24.972

Packing: 1 Piece

# ECONO



## CLEANING AGENT

- > Features: Base mounted, undersink pull-out unit  
All plastic elements are detachable for easy cleaning and are dishwasher safe  
One piece base with stream-lined wire surround
- > Material: Steel frame and runner, steel and plastic modular elements
- > Finish: Grey powder coated frame, runner and modular elements, grey modular elements
- > Dimensions (mm): 298 x 480 x 480 (W x D x H)
- > Load capacity (kg): 12
- > Extension length (mm): 440
- > Mounting: Screw fixing to base panel behind hinged panel



### Description

CLEANING AGENT

### Cat. No.

549.24.912

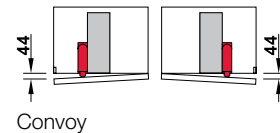
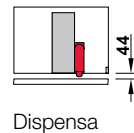
Packing: 1 Piece



## ETOUCH+ DOOR OPENER

With the eTouch+ there are no more architectural limitations. Kesseböhmer's tall cabinets can be planned into handle-less kitchens economically and without problems! The eTouch+ opening technology enables a high ease of use thanks to simple opening. Briefly pressing the front of the tall cabinet with hand or knee opens it slightly. The electronic opening also picks up on the Smart Home trend here.

- > Features: eTouch+ for Dispensa and Convoy pantries is electrically assisted to produce a 44mm gap when the door is pressed.
- > Suitable for: Cabinet widths from 300mm and can be retrofitted.



### Supplied with:

- > 1 Electric drive
- > 1 Front sensor
- > 1 Mains lead
- > Installation instruction and adapter front assembly

### Description

ETOUCH+ FOR TALL CABINETS

### Cat. No.

546.72.584

Packing: 1 Set



Clever Storage - ECONO 09.21

**Häfele Australia Pty. Ltd.** | 8 Monterey Road | Dandenong | Victoria 3175  
**Phone:** 1300 659 728 | **Fax:** (03) 9212 2001 | **Email:** [info@hafele.com.au](mailto:info@hafele.com.au) | [www.hafele.com.au](http://www.hafele.com.au)

**Häfele New Zealand Ltd.** | 16 Accent Drive | East Tamaki | Auckland 2013  
**Phone:** 0800 442 335 | **Email:** [info@hafele.co.nz](mailto:info@hafele.co.nz) | [www.hafele.co.nz](http://www.hafele.co.nz)

**HÄFELE LOCATIONS:**

**Australia** | MELBOURNE | SYDNEY | NEWCASTLE | BRISBANE | ADELAIDE | LAUNCESTON | HOBART | PERTH  
**New Zealand** | AUCKLAND | WELLINGTON | CHRISTCHURCH

