



HÄFELE

Alto Slim Drawer system

Brought to you by Häfele

Alto Slim

Drawer system

The Häfele Alto Slim drawer system increases the functional use of cabinetry with perfectly straight and thin 13mm drawer sides, making the drawer capacity larger, while maintaining the stability and quality with a load capacity up to 35 kg. Three side heights allow for flexible and versatile use from the kitchen to the wardrobe and bathroom areas. The option of white and black colours in matt finishes allows Häfele Alto Slim to meet everyday design requirements up to the continuing trend of darker decorative colours.







Alto Slim

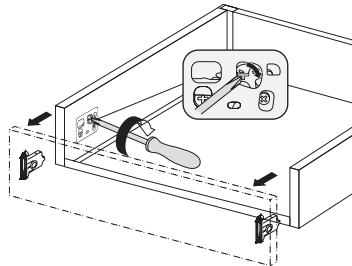
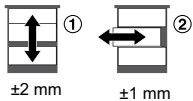
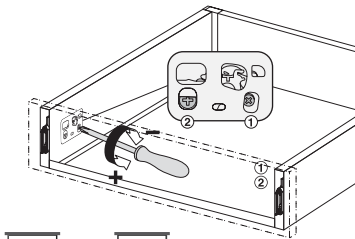
Tried & tested

Häfele Alto Slim has been tested and passed European DIN EN 15338 level 3 standards. This was achieved with a full 35 kg weight capacity over 60,000 opening and closing cycles.

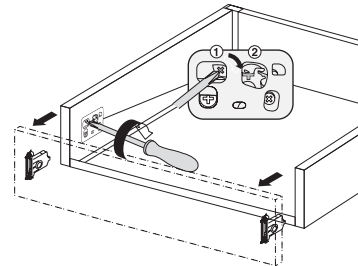
Installation & Adjustment

Comfortable height and lateral front panel adjustment from inside the drawer allows easy adjustment when installed in corners or against walls.

Easy front panel installation and removal.



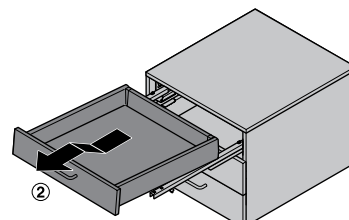
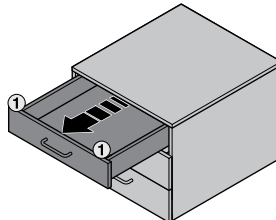
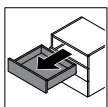
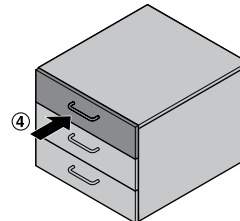
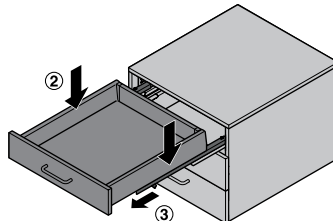
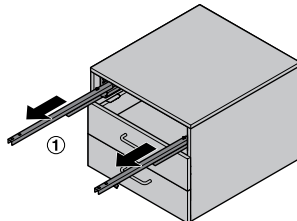
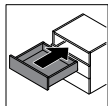
Side height 84 and 135 mm
(one-step removal)



Side height 199 mm
(two-step removal)

Drawer installation

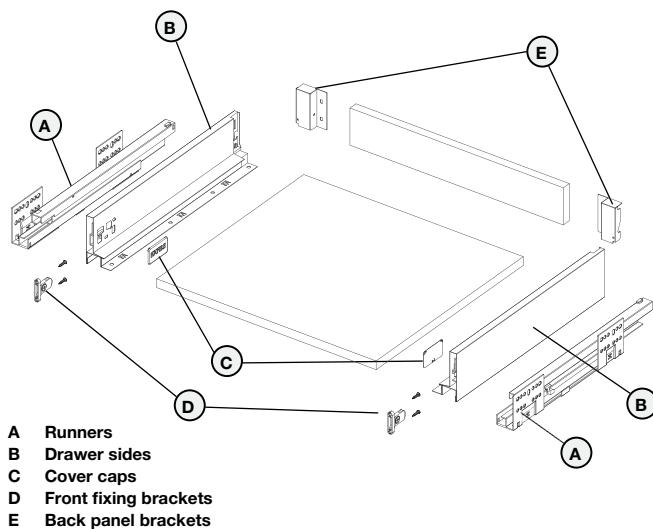
Installation and removal of the drawer box.





Drawer height **H84**

Standard sets



- > Colour: Matt white, Matt black
- > Material: Steel
- > Finish: Powder coated
- > Load capacity (kg): 35
- > Drawer height (mm): 84

Depth (mm)	Pallet QTY	Matt White	Matt Black
270	195	514.11.710	514.11.310
300	180	514.11.711	—
350	150	514.11.712	514.11.312
400	135	514.11.713	514.11.313
450	120	514.11.714	514.11.314
500	120	514.11.715	514.11.315
550	90	514.11.716	514.11.316

Packing: 1 set

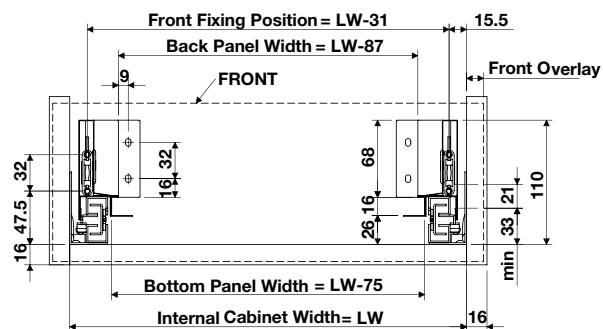


Supplied with:

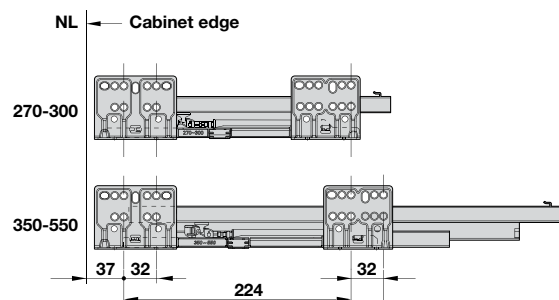
- > 1 Pair of drawer sides
- > 1 Pair of drawer runners
- > 1 Pair of back panel brackets
- > 1 Pair of expanding dowel front fixing brackets
- > 2 Piece of cover caps

Planning information

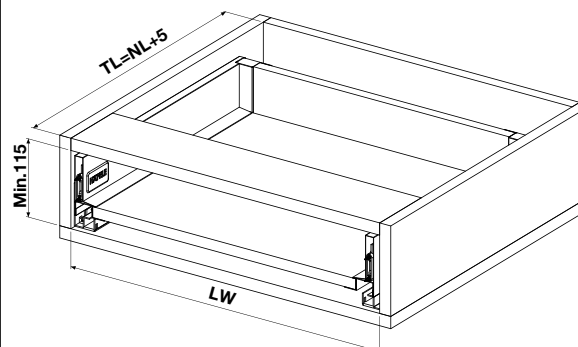
Mounting dimensions



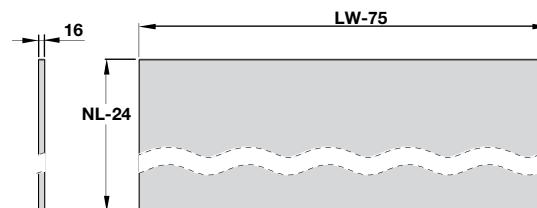
Drilling pattern



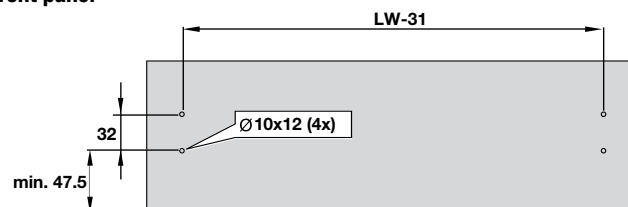
Mounting dimensions



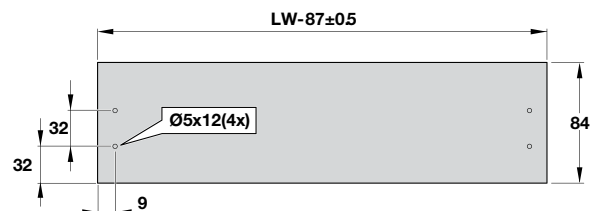
Bottom panel



Front panel



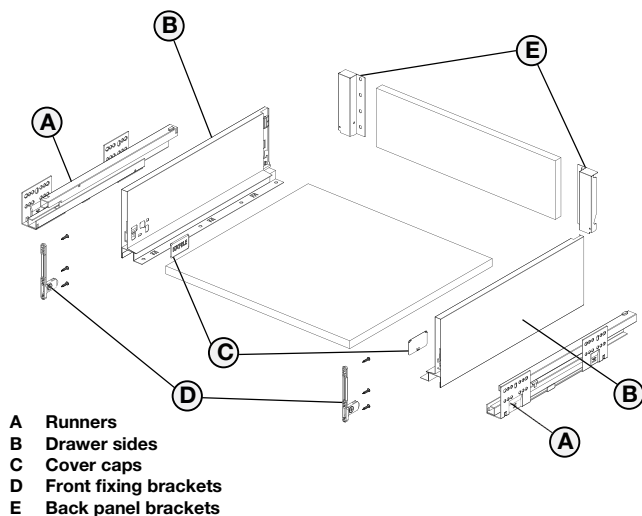
Back panel





Drawer height H135

Standard sets



> Colour:	Matt white, Matt black
> Material:	Steel
> Finish:	Powder coated
> Load capacity (kg):	35
> Drawer height (mm):	135

Depth (mm)	Pallet QTY	Matt White	Matt Black
270	135	514.13.710	514.13.310
300	135	514.13.711	—
350	120	514.13.712	514.13.312
400	90	514.13.713	514.13.313
450	90	514.13.714	514.13.314
500	90	514.13.715	514.13.315
550	75	514.13.716	514.13.316

Packing: 1 set

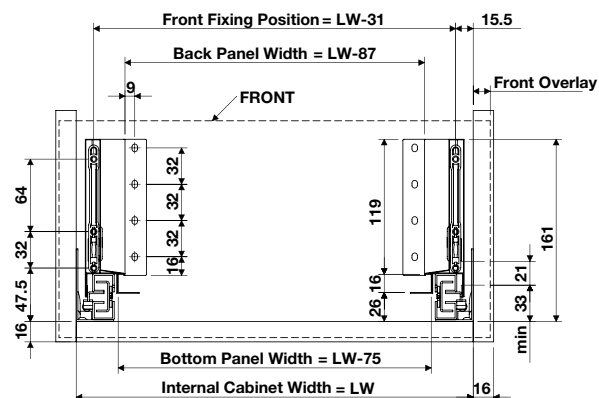


Supplied with:

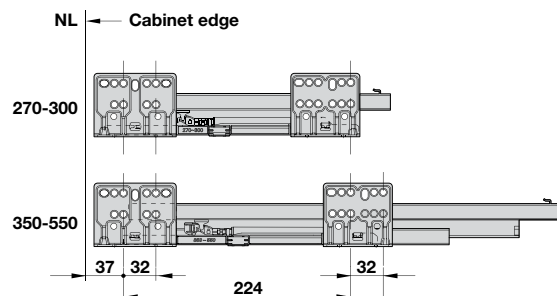
- > 1 Pair of drawer sides
- > 1 Pair of drawer runners
- > 1 Pair of back panel brackets
- > 1 Pair of expanding dowel front fixing brackets
- > 2 Piece of cover caps

Planning information

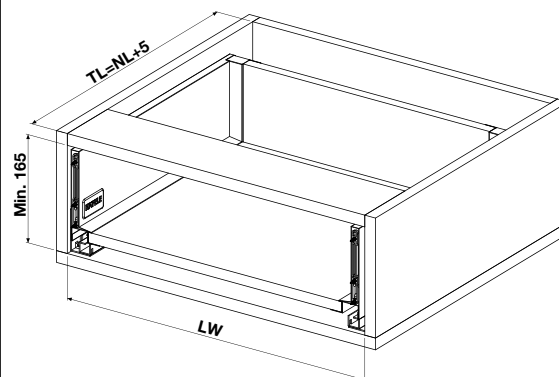
Mounting dimensions



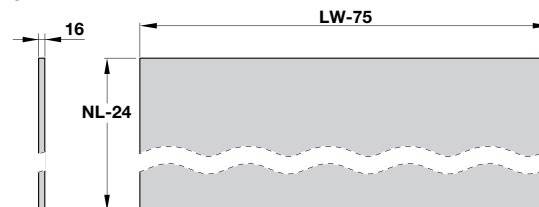
Drilling pattern



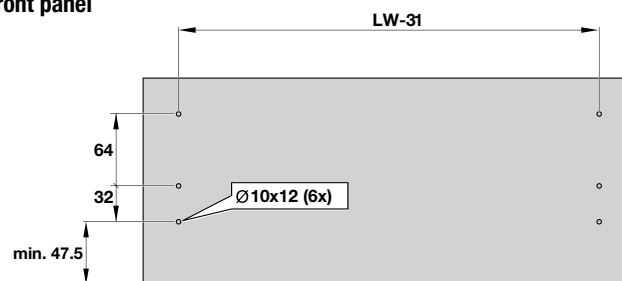
Mounting dimensions



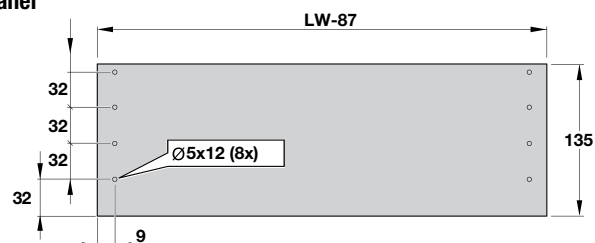
Bottom panel



Front panel



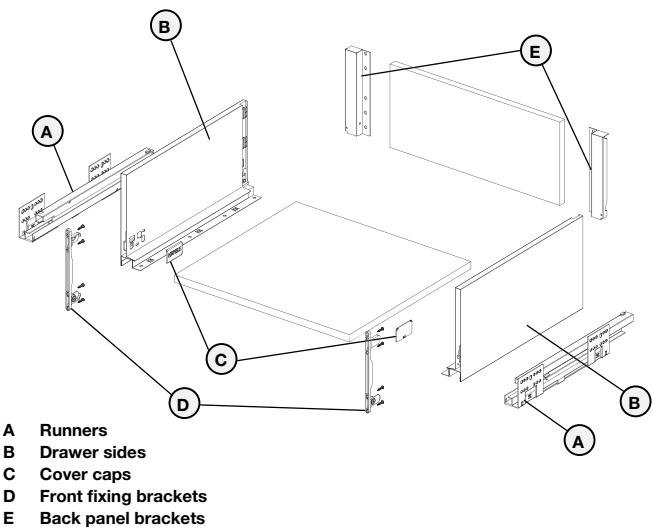
Back panel





Drawer height H199

Standard sets



- > Colour: Matt white, Matt black
- > Material: Steel
- > Finish: Powder coated
- > Load capacity (kg): 35
- > Drawer height (mm): 199

Depth (mm)	Pallet QTY	Matt White	Matt Black
270	90	514.15.710	514.15.310
300	90	514.15.711	—
350	90	514.15.712	514.15.312
400	75	514.15.713	514.15.313
450	60	514.15.714	514.15.314
500	60	514.15.715	514.15.315
550	45	514.15.716	514.15.316

Packing: 1 set

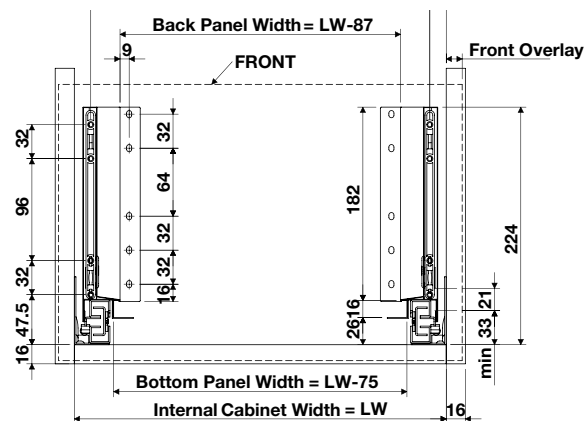


Supplied with:

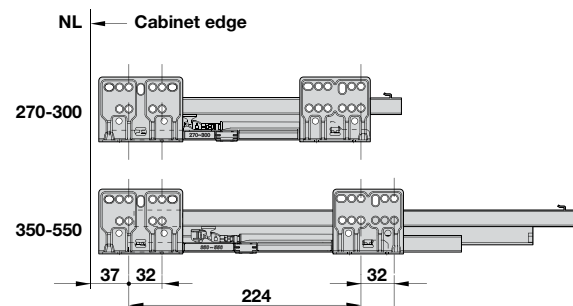
- > 1 Pair of drawer sides
- > 1 Pair of drawer runners
- > 1 Pair of back panel brackets
- > 1 Pair of expanding dowel front fixing brackets
- > 2 Piece of cover caps

Planning information

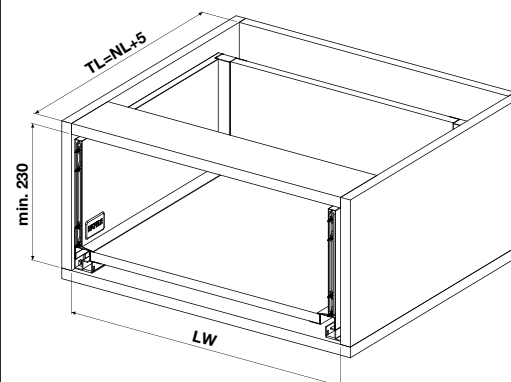
Mounting dimensions



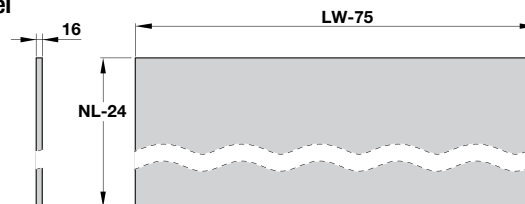
Drilling pattern



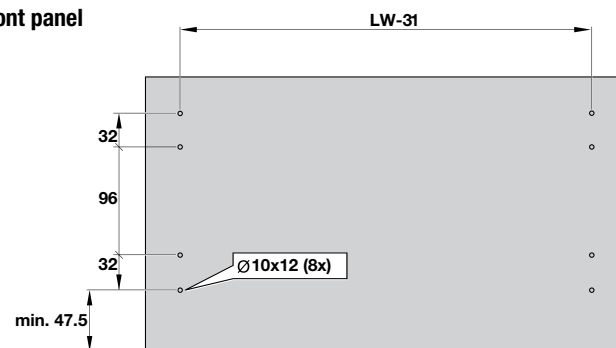
Mounting dimensions



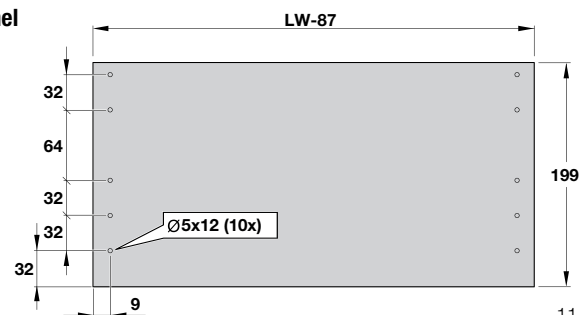
Bottom panel



Front panel



Back panel



Internal front components

Front panel



> Area of application:	Use with front panel end caps (Order separately)
> Material:	Aluminium, powder coated matt white or matt black
> Length:	1100

Finish	Cat. No.
Matt black	514.09.382
Matt white	514.09.782

Packing: 1 set



Note:
Panel length = Internal cabinet width less 87 mm

Cross rail



> Area of application:	Use with front panel end caps H135 and H199 (Order separately)
> Material:	Aluminium, powder coated matt white or matt black
> Length:	1100

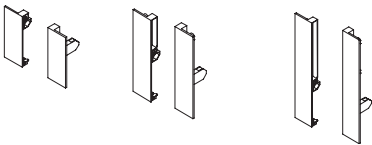
Finish	Cat. No.
Matt black	514.09.362
Matt white	514.09.762

Packing: 1 set



Note:
Cross rail length = Internal cabinet width less 57 mm

End caps



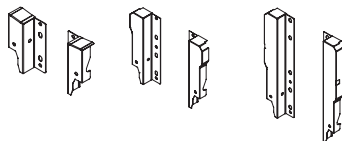
> Area of application:	Use with front panel and cross rail (Order separately)
> Material:	Plastic, white or black
> Mounting:	Screw fix to front panel and cross rail

Height	Finish	Cat. No.
H84	Matt black	514.09.390
	Matt white	514.09.790
H135	Matt black	514.09.391
	Matt white	514.09.791
H199	Matt black	514.09.392
	Matt white	514.09.792

Packing: 1 pair

Internal front components

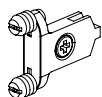
Back Brackets



Height	Finish	Cat. No.
H84	Matt black	514.09.310
	Matt white	514.09.810
H135	Matt black	514.09.311
	Matt white	514.09.811
H199	Matt black	514.09.312
	Matt white	514.09.812

Packing: 1 pair

Front Fixing



Mounting	Height	Cat. No.
Expanding dowel	H84	514.09.901
	H135	514.09.904
	H199	514.09.907

Packing: 1 piece

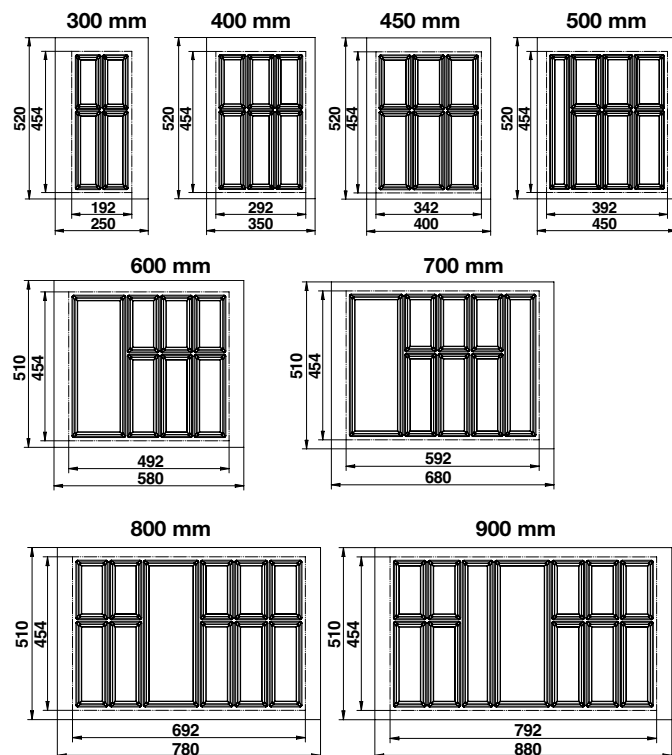
Cover Caps

Finish	Cat. No.
Matt black	552.50.288
Matt white	552.50.788

Packing: 1 piece



Classico 500 cutlery tray



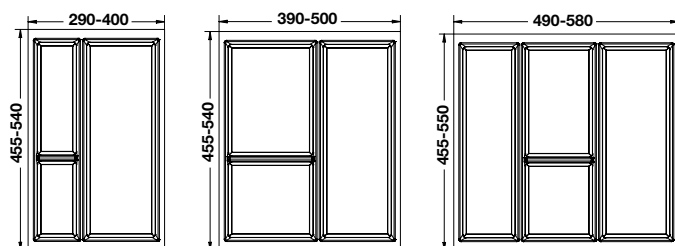
- > Area of application: Suitable for drawers with a depth of 500 mm
- > Material: Plastic (vacuum formed)
- > Finish: White, non-slip black
- > Height (mm): 51
- > Insert depth (mm): 510 and 520
- > Thickness (mm): 2.5

To suit cabinet width (mm)	Insert width (mm)	White	Black
300	250	556.52.720	—
400	350	556.52.722	556.51.302
450	400	556.52.723	556.51.303
500	450	556.52.724	—
600	580	556.52.726	556.51.306
700	680	556.52.727	—
800	780	556.52.728	—
900	880	556.52.729	556.51.309

Packing: 1 piece



Classico-multi utensil tray



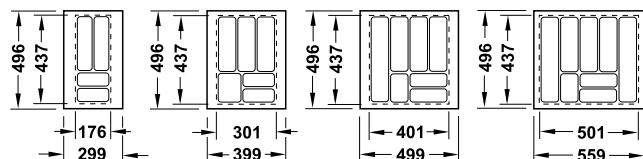
- > Area of application: For drawers with a depth of 500 or 550 mm
- > Material: Plastic (vacuum formed)
- > Finish: White
- > Height (mm): 51
- > Insert depth (mm): 540 and 550
- > Thickness (mm): 2.5

To suit cabinet width (mm)	Insert width (mm)	Cat. No.
450	290 - 400	556.51.782
500	390 - 500	556.51.784
600	490 - 580	556.51.786

Packing: 1 piece



Basic cutlery tray



- > Area of application: Suitable for drawers with a depth of 500 mm
- > Material: Plastic (injection moulded)
- > Finish: White
- > Height (mm): 50
- > Insert depth (mm): 496
- > Thickness (mm): 2.5

To suit cabinet width (mm)	Insert width (mm)	Cat. No.
300	176 - 299	556.60.752
450	301 - 399	556.60.761
500	401 - 499	556.60.770
600	501 - 559	556.60.789

Packing: 1 piece

**FOR CARCASE 450MM, SUPPLIED AS
A COMPLETE SET, PRE-ASSEMBLED
WITH MATRIX BOX S DRAWER SIDES**

Ninka **one2lite** waste bin system



- > **Features:** Supplied pre-assembled with Häfele Matrix Box S drawer sides and steel back panel. Three dimensionally adjustable front support brackets, bin pails same height level as drawer, waste bags strongly fixed by means of carrying handle.
- > **Material:** Cover plate and pails: 100% recyclable food grade polypropylene, Frame and drawer sides: Steel and plastic
- > **Colour:** Cover plate, pails and hanging frame: Dark grey, Drawer side: White
- > **External cabinet width (mm):** 450
- > **Weight capacity (kg):** 35

Waste bin pail configurations:

17	26	32
17	26	32

Configuration	Pail Height (mm)	Cat. No.
2 x 17	311	502.92.810
2 x 26	450	502.92.811
2 x 32	570	502.92.812

Packing: 1 piece



Supplied with:

- > 1 Hanging frame with pre-assembled Matrix Box S drawer sides
- > 2 Full extension soft close runners
- > 1 Lid cover plate
- > 2 Cover plate suspension rails
- > 2 Waste bin pails



Note:

Minimum internal installation height = pail height plus 40 mm

ENGINEERED
BY **HÄFELE**

METALLA 310 SOFT CLOSE HINGES

Brought to you by Häfele



SCAN ME

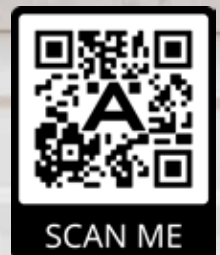
IMPACT CUSTOMISED PAINTED DOORS

The Impact Customised Painted Door range offers a variety of choices and combinations to bring your kitchen to life. With a comprehensive range of door styles and colour options, this exciting new range encompasses designs and finishes which appeal to all.

Häfele are sure to have a door profile to suit your lifestyle and the colour choice is only limited by your imagination. Select from Shaker, flat panel, finger grip and traditional arch designs in the colour of your choice, with Satin or Gloss finish optional.

Partnering with one of Australia's leading manufacturers ensures the highest quality doors and service to complete your project, backed by a 7 Year Limited Warranty.

Any sized kitchen or bathroom requirement or scale of project is possible, as we offer a flexible service for specific project requirements.





HÄFELE

732.04.055 HÄFELE ALTO SLIM - 08.23

Häfele Australia Pty. Ltd. | 8 Monterey Road | Dandenong | Victoria 3175

Phone: 1300 659 728 | **Fax:** (03) 9212 2001 | **Email:** info@hafele.com.au | www.hafele.com.au

Häfele New Zealand Ltd. | 16 Accent Drive | East Tamaki | Auckland 2013

Phone: 0800 442 335 | **Email:** info@hafele.co.nz | www.hafele.co.nz

HÄFELE LOCATIONS:

Australia | MELBOURNE | SYDNEY | NEWCASTLE | BRISBANE | ADELAIDE | LAUNCESTON | HOBART | PERTH

New Zealand | AUCKLAND | WELLINGTON | CHRISTCHURCH

